

AEGIS

Design revolution that empowers the safe users

Fire resistant safes User manual



Warning & Caution



Please read these instructions carefully and comply with the warnings and cautions to prevent damage or risk.

⚠ Warning

- Be careful while moving the safe, as there is a risk of injury due to its heavy weight.
- Watch out for the edges of the safe.
- Keep children away from the safe, as they might get caught inside the safe if the door closes automatically.

⚠ Caution

- Fingers might get injured while closing the door.
- The safe can cause scratches on the floor or table.
- Magnetic devices near the touch-panel may cause malfunction.
- Do not scratch or peel the touch-panel surface with sharp devices
- Please keep the safe away from volatile chemicals such as gasoline, alcohol, acetone and thinner, as these chemicals can cause irrevocable damage.
- Avoid direct fire or heat sources.

Diagrams

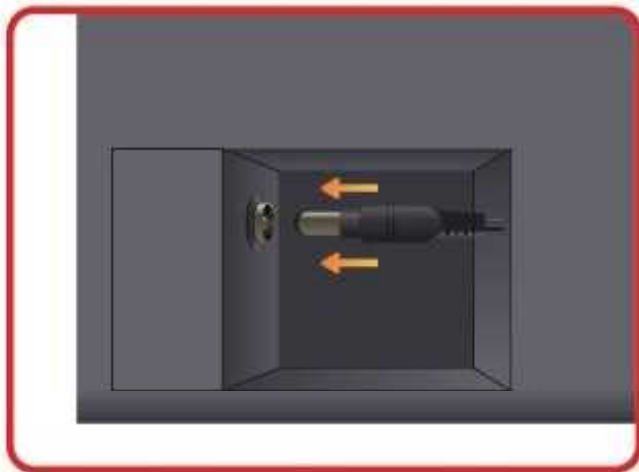
<Outside>



<Inside>



Connecting adaptor



<Back of the safe>

This safe is designed to be use with an adaptor.

Insert adaptor into DC socket located at the back of the safe.



- Adaptor cable should not be pinned under the safe.
- Before connecting, check the voltage is 220V.
- Make sure the adaptor is completely inserted.

Battery replacement



Turn counterclockwise to 10 o'clock



Replace all four 1.5V batteries at once



Fit and turn clockwise to original position



- Duration of batteries are approx. 3-5 months
- When "Lo-bAt" alarm message is shown, replace batteries right away.
- Be careful not to damage the cables when removing from the cover.

Opening /closing door



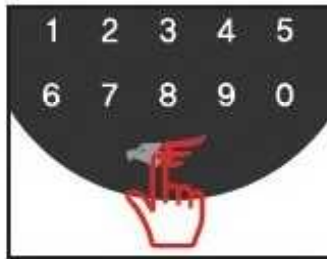
The Personal code of this safe has been set as 1,2,3,4,5,6 and should be changed by the user.



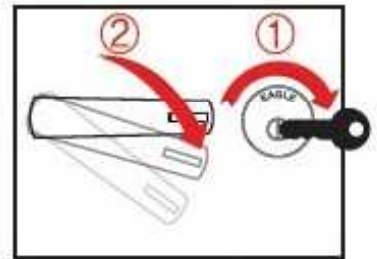
Push the start button (Eagle logo)



enter password



push the start button



turn the key and handle

- Should the wrong code be entered more than 5 times in a row, the alarm will sound. Enter the correct code to stop the alarm.
- An additional 3 failures will cause a 3-minute system lockdown.
- After 3 minutes, try the correct code again.
- An alarm will be activated when door is open for more than 5 min.
- Input the password once again to stop the alarm.
- Push start button twice, then enter the password, which will appear as "----" on the screen display for privacy.
- Once you close the door, the bolts will go into the locking position automatically.

Opening the door with biometric fingerprints



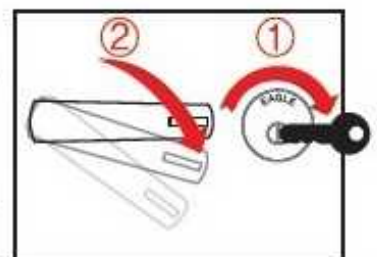
Push start button



swipe fingerprint on the reader



door mechanism will release





turn the key and handle



- If a fingerprint is not registered initially, only the password can open the door.
- "Err-04" message will be shown when a fingerprint is swiped incorrectly or an unauthorized fingerprint attempts access.
- Dirt, sweat, injuries, cuts, scars or wounds may cause the Err-04 message to appear.

Programming the codes

 Make sure the new password works before closing door.

 Combination of any 4~20 digit code can be used as a password.



Push memory button once shortly



-Code-



- - - - -

Enter code



Input new password and push START



Enter new password again and push start button



USER 1

Finished
OK

Registration of fingerprints

Maximum 10 fingerprints can be saved

! Make sure each new fingerprint works before closing the door.



SEt

Push memory button for 3 seconds



FI nGEr

Push memory button once shortly



press "0"



Swipe fingerprint



Swipe fingerprint one more time

Id-01

Finished
(Screen will show user No. as Id No.)

Deletion of biometric fingerprint

☀ "no-Fr" will be displayed when there are no fingerprints registered.



SEt

Push memory button for 3 seconds



FI nGEr

Push memory button once shortly



press "1"

dELEtE

"dELEtE"



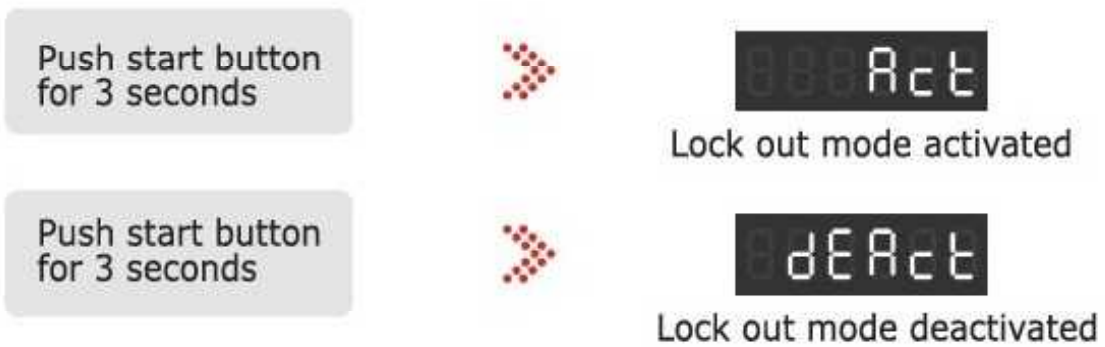
Input ID No. to delete and press Start button

dEL_01


Finished

Additional functions

Lock out mode to prevent unauthorized access



Volume control

 Make sure the door is open during this process.

Control of voice instruction volume



Beep on/off



Trouble shooting

Problem	Factor	Solution
Start button is not working	<ul style="list-style-type: none"> -Lack of battery power -Problem with battery connection -Lock out mode is activated -PCB failure 	<ul style="list-style-type: none"> -Change batteries to new ones -Check if the batteries were inserted properly -Push start button for 3 seconds to deactivate lock out mode -Contact the local retailer
Malfunction in touch panel	<ul style="list-style-type: none"> -Inaccurate touch entry -Contact with other part of body -Dirt or foreign material on the panel -Dirt or foreign material on finger 	<ul style="list-style-type: none"> -Make sure to touch the correct number squarely -Avoid contact with other parts of the body -Clean any dirt or foreign material from the panel -Clean any dirt or foreign material from the finger
No power supply (when adaptor is connected)	Incomplete connection to adaptor jack	Clean adaptor jack after removing batteries.
No power supply (when using battery)	Check battery remains, poor battery contact	Replace battery, check +/- poles
Display Error_Err-03	Wrong code entered	Enter the correct password.
Passcode failure exceeds limit. Display Error_Err-03	Lock-out engaged owing to wrong code input more than 5 times	Enter the correct password. If this does not work, enter the correct password after 3 min. beeping.
Cannot open door after entering password	Obstacles near safe	Remove obstacles in the door's path.
Door won't lock automatically after closing the door	Check that door is closed completely or if there are any obstacles in the door's path	Close door completely : Remove obstacles in the door's path.
Cannot change the password or previous password is still valid	Time out Wrong process Trouble with button	<ul style="list-style-type: none"> -Repeat the process -Time gap should be less than 5 seconds
Display Error_ door	Obstacles near safe	Enter the password or close the door
Display Error_Err-04	Unregistered fingerprint	Try the fingerprint already registered
Display Error_Err-05	This message is shown when the safe is forcefully opened or there is a sensor problem	<ul style="list-style-type: none"> -Input the password -If the message repeated, contact the local retailer.
Display Error_Err-11	Fingerprint operation failure.	<ul style="list-style-type: none"> -Try again or register new, clear fingerprint -If the message is repeated, contact the local retailer.
Display Error_Err-13	Fingerprint module has problem.	Contact the local retailer.